

May 2016

Signal Mountain Golf and Country Club

Club News



President's Message	2	Mother's Day Brunch	9
Out of the Rough	3-4	News & Announcements	10
SMLGA News	5	Weekly Dining Specials	11
Golf News	6	Calendar of Events	12-13
SMGCC Invitational	7	Club Information	14
Everything Social	8		

www.smgcc.org

President's Message

Spring is in the air; April was a fun month at the club for both golf and social events. I would like to thank our social and membership committees for putting together a fantastic Casino party. We had over 120 in attendance and everyone was a winner if fun counts as a prize.

I hope you have seen the new custom tables in the upstairs bar. This project was headed up by Mary Catherine Robbins and completely paid for with private donations. Every comment has been positive--that they add an upgraded touch to the bar area. Based on member response and support, we could do a similar upgrade for the deck and dining room. Please let Mary Catherine or me know if you would be interested in helping with this project.

The Signal Mountain Invitational is May 20-22. You still have time to sign up to play and/or sponsor. All event sponsors will be invited to the sponsor's party on Friday evening. This event showcases our club to many of the areas top golfers.

As we move into the busy season don't forget our spring membership drive ends May 31. Continue to tell your friends and neighbors about membership and its benefits.

See you at the club.

Mike LeVan

Membership Special

The membership committee with board approval has instituted a membership drive reducing initiation fees in the Junior and Full Golf Categories. This Special will ONLY be available from March 1, 2016 -May 31, 2016.

The Junior (Under 40) special is a \$1,000 initial payment and installment payments of \$50.00 per month for 40 months totaling \$3,000. A savings of \$2,000!!!

The Full special is a \$2,000 initial payment and installment payments of \$50.00 per month for 40 months totaling \$4,000. A Savings of \$1,000!!!



Out of the Rough May 2016

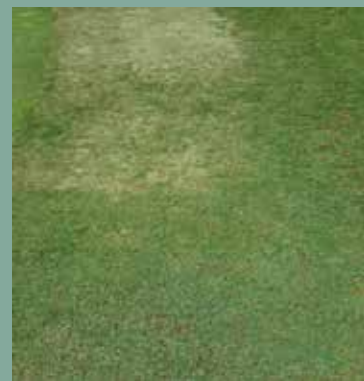
May is upon us and I'm optimistic it will bring the weather the course needs to turn the page from winter. In this month's newsletter I'll discuss a couple turf related topics and update you on our project work.

Bermudagrass, which is our primary turf grass on fairways, tees and approaches, is a warm season grass. This means it doesn't reach its active growing period until soil temperatures reach 65 degrees. Bermudagrass knows no calendar, special event date or the like. It is simply a plant that will begin to grow when the environmental conditions are right. Once conditions are met for plant growth we can manipulate the system with supplemental fertility etc. We are just now reaching those environmental conditions on portions of our golf course. This being a 100 year old golf course, there are no less than 5 types of Bermudagrass on the course. Each have their own unique growing requirements, so they don't all green up and grow at the same exact time. In addition to variations in plant material, we have several unique growing environments.



The photo above shows the difference in growing environments on the 4th fairway. The center portion of the fairway faces the south and west, receives a great deal of sunlight, and is naturally well drained. The left hand portion of the fairway is heavily shaded, has a great deal of root encroachment from nearby trees and is habitually wet due to the nature of the surrounding grade. The result is that the left side of the 4th fairway is a couple weeks behind in relation to the center of the fairway.

Several areas that were sodded last year have been slow to green up. While I do expect to see a little bit of damage to the right of the 16th and 17th holes, other areas are now starting to green up. Sod work will be considerably less this year than in the past number of years. The photo below shows an area that was entirely brown the second week of April but is now greening up nicely. We have to be patient with some of these areas as it's the only way to break the cycle of sodding each year.



We are in the process of installing some nice rock work around several cart path edges. This will help prevent erosion and protect the turf near some of our really sharp turns. Recently we've repaired or installed these along the 1st tee, 2nd tee, 5th green, 6th tee, 14th tee, 16th tee, 17th tee and 18th tee.

As a final note, please help us protect the turf by keeping carts on the path near greens and tees; specifically, the 2nd green! Carts should never be driven to the rear of that green. Additionally, please keep your cart on the path until you get 90degrees from your golf ball. Driving up the fairway the entire length of the hole is never proper etiquette. None of us like to see ropes and signage on the course. They aren't cheap to buy and can consume 2-4 hours of labor each day to adjust and set up. Out of necessity, we will have a much greater amount of them on the course this season.

Please, if you'd like to discuss any of these topics in greater detail feel free to contact me at prose@smgcc.org. I'm always happy to spend some time on the course with members to discuss any concerns they may have. If you aren't following the Department's Twitter account (@SMGCCTURF) you are missing out! It's easy to sign up and get updates on what to expect when you arrive for your tee time.

See you on the course!
Pat



SMLGA News

It's May, It's May. Everyone come out and play.

The golf course is greening up and our season has gotten off to a great start. There are sign up sheets in the ladies' lounge for Tuesday and Thursday morning play as well as various events happening around the area.

The Association match play tournament (Kistler Tournament) will start on Thursday, June 2 and go through the summer. Yes, the sign up sheet for that is also on the ladies' lounge bulletin board.

When you're in the lounge be sure to pick up a registration form for our invitational, Lavish and Decadent goes to the Beach. We will cut off at 80 players. There was a waiting list last year. It will be held on June 9th and you KNOW that's going to arrive in a flash, so sign up soon. Contact DeeDee Raulston or Chee Allen for additional information.

Saturday golf is up and running. Give Sylvia Friedl your email address (sylviafriedl@hotmail.com) and she'll add you to the weekly mailing list. We usually play 18 holes starting around 10:45.

There will be a weekly morning ladies' clinic starting in the next few weeks. Check with the pro shop for details.

SMLGA News



Lifeguards Needed

We are looking for certified lifeguards for the 2016 season! (16 years or older)

If you know of someone who would be interested, this is the time of year certification classes are offered.

Contact: Michael Rupe 423-886-5767 X 249

Golf News

Signal Mountain Invitational

The 80th Signal Mountain Invitational is just around the corner. The event will be held May 20th-22nd. The Invitational is one of the premier amateur events in the southeast. The tournament always draws a very strong field that typically includes several of our members. I hope this year will be no different. The unique thing about the Invitational is that it appeals to all ranges of golfers. The championship flight will house some of the best amateurs in the area while the stableford division will include golfers with a 10.0 handicap or higher. We hope to once again have a great turnout from our membership competing in this great event this year. If you cannot participate but still wish to help out, we are still accepting sponsorships. Sponsorships are \$100. The sponsorship fee will get your name or company name listed on the sponsorship board displayed at the putting green for the entire tournament, your name listed on all of the cart signs, and listed on next year's invitation. The sponsorship will also get you an invitation to a great party held at the Country Club Friday, May 20th. Please contact the golf shop if you would like to sign-up or sponsor. One additional way to help this great event succeed is through voluntary efforts. With several blind tee shots and some participants playing this course for the first time, we love to have spotters out on the golf course to help players find the occasional errant tee shot. We also need volunteers to help at the scoring table. Please contact the golf shop if you would like to volunteer.

Lockers and Handicaps

If you haven't already done so, reserve a locker in the Men's Locker Room to reduce some of the clutter in your trunk and never forget your golf shoes at home again. Your locker will also make a great place to store a golf shirt for those days when you sneak out of work a little early. Locker fees are \$100 for the year or \$9 per month. One of the best ways to meet new people and really enjoy what the club has to offer is to compete in some of our great golf tournaments. To be able to compete in these events we do require a USGA GHIN handicap. Check in with the golf shop if you would like to get a handicap established. Handicap fees are \$30 per year. If you have someone that you would like to invite to this year's Mountaineer who does not currently have a handicap, we can get them established at the Club. They can enter their scores online or through the GHIN app. All members and guests must have a USGA handicap.

Mom's Night Out Clinic

Keep an eye on your email for information regarding this month's upcoming Mom's Night Out Clinic.

Tournament Results

For all tournament results, check out our website: www.smgcc.org. The results are located under the golf tab.

Upcoming Dates

May 20-22- Signal Mountain Invitational
May 27- Friday Couples Begins
May 30- Memorial Day Scramble/Shootout #2
June 3-5- Men's Club Championship (Championship Flight)
June 3-5- Men's Club Championship (All Other Flights)

Save The Date

July 22-24- Mountaineer
September 17-18- Malarkey Cup
October 22-23- Challenge Cup @ Black Creek





2016 Signal Mountain Invitational

The Invitational is once again just around the corner on May 20th-22nd. As you know, the 54-hole event is one of the oldest in the state and will showcase some of the top players in our area. We hope to again draw an outstanding amateur field. The club cannot put on such a great state-wide, amateur event without the help of our wonderful membership. Whether a monetary sponsorship donation, tournament participation, or just volunteering to help out; the success of the event is widely based on your generosity. Please contact the golf shop if you would like to play, volunteer, or sponsor.

Format of Play

Handicap Index 9.9 or less.
54 - Hole Stoke Play Competition

Handicap Index of 10.0 or Higher
54 - Hole Stableford (Points) Competition

All flights Determined by USGA Handicap.

Entry Fee (\$160.00)

Three rounds of golf with cart, range balls, and pairings party for two.

***Participants receive World Amateur Golf Ranking Points, Scratch Player World Amateur Ranking Points, and Level II TGA Player of the Year Points.**

The sponsorship fee will be \$100 and we request that this payment be submitted by May 15th. Our goal is to obtain all payments by this date in order for our sponsors to be accurately listed on all publications. If this is not practical, we will of course accept sponsorship money at any time prior to the event. The money received from your sponsorship is directly used to fund the awards given away during the tournament. As a reward for your generosity, a sponsor's party will be held at Signal Mountain Golf and Country Club.

Everything Social

WOW!! Thanks to Woody Hamilton, Kathryn Trimble and all the volunteers from the Social and Membership Committees for planning the Casino Party! It was a huge success with a great turnout. Look for another membership drive party on June 18—a Low Country Boil/Pool Party! Details to come!

May is full of events—so mark your calendars!

Friday, May 6 from 6-7pm—Crafts for Kids –Enjoy dinner in the Main Bar or Dining Room while your kids ages 5+ make Mother's Day Gifts and have dinner in the Ball Room—all for \$15/child. Reservations are required and due by May 4—space is limited.

Saturday, May 7—Kentucky Derby Party from 5-7pm on the patio. Join us to watch The Run for the Roses with traditional Derby cocktails and heavy hors d'oeuvres. A fun derby Calcutta will be played for those who want to participate. Festive derby attire is encouraged. Price is \$50/couple or \$25/single++. Reservations are required for this event by May 4.

Sunday, May 8—Mother's Day Brunch from 11am-3pm. No regular breakfast service on this day. Price is \$24/adults and \$10/children. Reservations required by Friday, May 6. Cancellations must be made Friday, May 6—subject to charges if not. No shows will be charged too.

IT'S POOL TIME!!! The ladies Pre-Pool Party is May 24th with music, drinks, food and more. Please make your reservations. The pool opens to everyone Memorial Day Weekend on May 27th. Plan for a Memorial Day poolside BBQ and bourbon party--more details to follow. Remember the club is closed the Tuesday following Memorial Day.

A few reminders—

Thursday, May 12—Main Dining Room closed for a member function. Main Bar, Grill, and To-Go orders all available.

Friday, May 20—Club will close at 3pm for Signal Mountain Invitational party

Saturday, June 25—Entire Club/Pool will close at 3pm for a members wedding reception (300 people!)

Thank You—and remember call for reservations (423) 886-5767 ext 245 or ext 3

James Fletcher

Everything Social



Mother's Day Brunch

May 8th • 11am - 3pm

Pinot Noir Shrimp Cocktail
Lobster Bisque
Smoked Salmon with Dill Cream Cheese
Garden Salad Bar
Egg and Omelet Station

Chef Carved Meats
Herb Roasted Lamb
Honey Glazed Ham

● Poached Salmon with White Wine Capers and Butter
Chicken Pizza I'ola
White Truffle Mashed Potatoes
Lobster Macaroni and Cheese
Wild Mushroom Risotto
Chef's Vegetable Medley
Assorted Desserts

●
\$24 Adults
\$10 Children 6-12

●
*Cancellation deadline is Friday, May 6th at 5:00pm.
Cancellations after that time, or no shows will be charged according to club policy.*

●
Call for reservations (423) 886-5767 ext 245
or ext 3.





Join Our Mailing List
Click Here

The Signal Mountain Golf & Country Club would like to extend a warm welcome to the following new members and returning members for May 2016.

Welcome To:

Paul D. Bing (Social), an EM care physician with Parkridge ER, and wife Aimee Lombard and children Jules (4) and Oliver (3). Recommending members Jim Vaughn and Woody Hamilton

Carl and Marilyn Black (Non-Resident Social), retired. Recommending members Woody Hamilton and Katherine Powers

Edward Colin Johnson (Social), Civil Engineer Consultant with Ragan Smith Associates, and wife Kirby and children Blevin (4) and Salem (2). Recommending members Woody Hamilton and Wayne Palmer

Warren Lusk (Student), VP of Operations Versa Court, and wife Eden and children Anderson (12) and Pearce (9). Recommending members Woody Hamilton and Katherine Powers

Scott Massey (Social), Sales for Coyote Logistics, and wife Taylor and daughter Anne Elizabeth (10 months). Recommending members Kathryn Trimble and Alan Smith

Joe Romanchik (Social), Advisor with UBS, and wife Lisa and children Stephanie (18) and Brooke (14). Recommending members Peter Knoop and Kevin King

John A. Shoaf (Social), a self-employed attorney, and wife Sharon. Recommending members Katherine Powers and Jane Boyle

Kyle Wittler (Futures), Production Planner/Scheduler at Komatsu, and wife Malone. Recommending members Lauren Davis and Laurel Powell

SMGCC Book Club

Thursday, May 19, 6 pm

May Selection:
Breakfast with Buddha by Roland Merullo

Thursday, June 16, 6 pm at the home of Tamara Wood

June Selection:
Coal River by Ellen Marie Wiseman

The Book Club normally meets on the third Thursday of every month in the President's Room, and all the ladies of the club are invited to join the group and stay for dinner. Please call the club to make your dinner reservation and tell them you will be dining with the Book Club. There are some months when special events are planned and the information will be posted in the newsletter.



Weekly Evening Specials

Tuesday

Kids eat free in the dining room with purchase of an adult entrée.

Friday

Chef's Specials

Saturday

Breakfast 8am - 11am

Saturday, May 7th

Kentucky Derby Party from 5-7pm on the patio. Join us to watch The Run for the Roses with traditional Derby cocktails and heavy hors d'oeuvres. A fun derby Calcutta will be played for those who want to participate. Festive derby attire is encouraged. Price is \$50/couple or \$25/single++. Reservations are required for this event by May 4.

Sunday

Breakfast Buffet

Sunday, May 8th

Mother's Day Brunch from 11am-3pm. No regular breakfast service on this day. Price is \$24/adults and \$10/children. Reservations required by Friday, May 6. Cancellations must be made Friday, May 6—subject to charges if not. No shows will be charged too.

Specials



MAY 2016



Sunday	Monday	Tuesday	Wednesday	Thursday	Friday	Saturday
1 Breakfast Buffet \$8.99 Member/ Member	2	3 Family Night	4	5	6 Chef's Specials Kid's Mother's Day Craft	7 Kentucky Derby Patio Party 5-8pm
8 Mother's Day Brunch	9	10 Family Night	11	12 Main Dining Room closed for member function	13 Chef's Specials	14
15 Breakfast Buffet \$8.99	16	17 Family Night	18	19 Book Club	20 Signal Mountain Invitational Club Closes at 3pm	21 Signal Mountain Invitational
22 Breakfast Buffet \$8.99 Signal Mountain Invitational	23	24 Family Night Ladies Pool Preview Party	25	26	27 Chef's Specials Couples Golf Begins Pool Opens	28
29 Breakfast Buffet \$8.99	30 Memorial Day Scramble / Shootout #2	31 Club Closed				

JUNE 2016



Sunday	Monday	Tuesday	Wednesday	Thursday	Friday	Saturday
			1	2	3	4
				Kistler Cup Begins	Chef's Specials Men's Club Championship	Men's Club Championship
5	6	7	8	9	10	11
Breakfast Buffet \$8.99 Men's Club Championship		Family Night		Ladies Invitational	Chef's Specials	Match Play Begins
12	13	14	15	16	17	18
Breakfast Buffet \$8.99 Spring Couples		Family Night			Chef's Specials	
19	20	21	22	23	24	25
Breakfast Buffet \$8.99	Super Skins/ Shootout #3	Family Night	Carol Floyd Tournament	Carol Floyd Tournament	Chef's Specials	President's Cup Club/Pool Closing at 3pm for member function
26	27	28	29	30		
Breakfast Buffet \$8.99 President's Cup		Family Night	One Day Mem-Mem / Mem - Guest			



Clubhouse Extensions:
(423) 886-5767

Pro Shop & Tee Times
Ext: 226

To-Go Orders & Reservations
Option: 3

Business Office
Ext: 225

Chef's Office
Ext: 242

Main Bar
Ext: 223

Men's Card Room
Ext: 227
Tuesday - Friday 10am - Dark
Saturday & Sunday 8am - Dark

Club Manager
Ext: 242

Administrative Fax
(423) 886-2879

Golf Shop Hours

Tuesday - Sunday
7:30 am - Dusk

Range

8am - Dusk

Clubhouse Hours

Signal Grill

Tue - Wed: 11am - 8pm
Thu - Sat : 11am - 9pm
Sunday: 9am - 8pm

Dining Room

Tue - Wed: 11am - 8pm
Thu - Sat : 11am - 9pm
Sunday: 9am - 8pm

Main Bar

Tue - Wed: 11am - 8pm
Thu - Sat : 11am - 9pm
Sunday: 9am - 8pm

Signal Mountain Golf & Country Club

Board of Directors 2016

OFFICERS:

Mike LeVan, President
Woody Hamilton, Vice-President
Shawn Devine, Treasurer
Mary Catherine Robbins, Secretary
Bobby Morrison, Past-President

DIRECTORS:

Harry Cash
David Cates
Jean Cates
Steve Dobson
Mark Ellis
Andy McDaniel

MANAGEMENT STAFF:

Pat Rose, Golf Course Superintendent
Paul Helle, Head Golf Professional
James Fletcher, Food & Beverage
Katherine Powers, Accounting